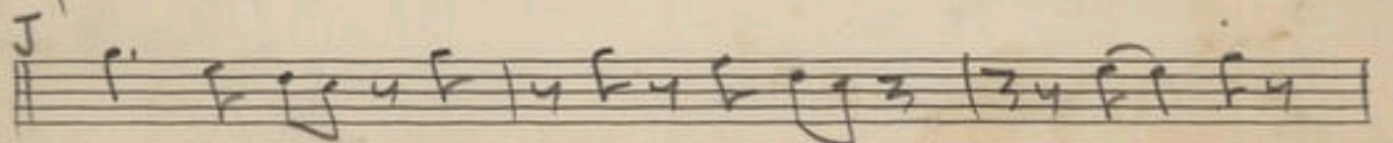
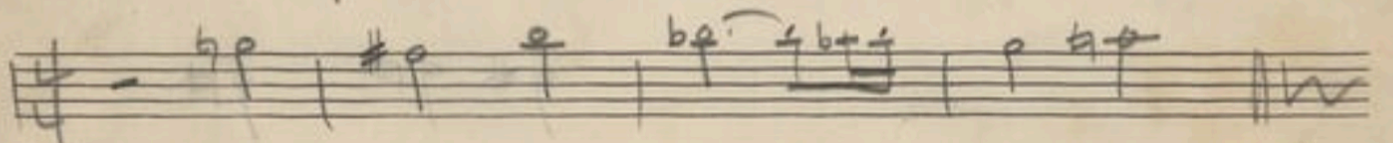
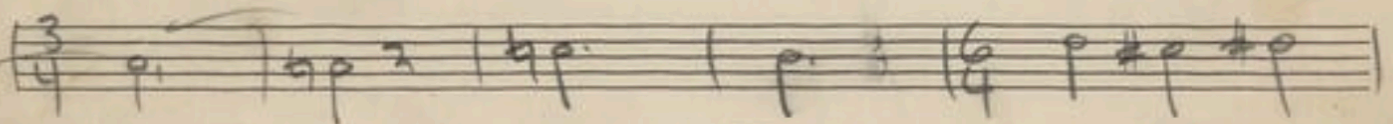
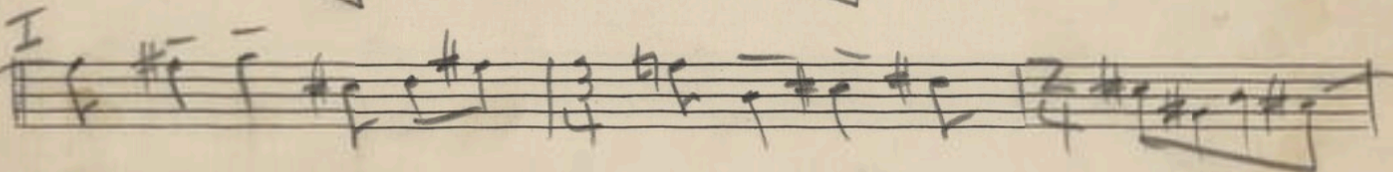
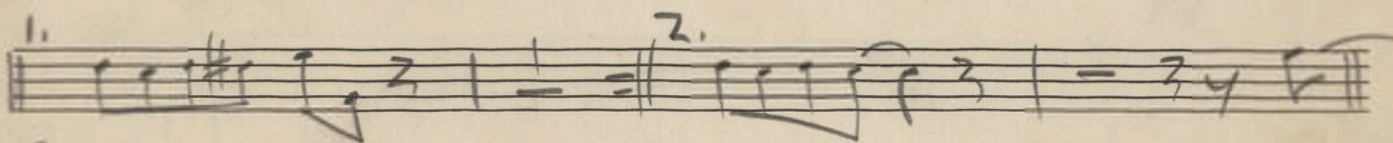
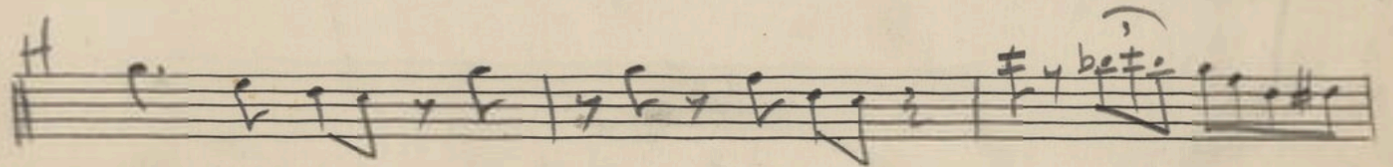
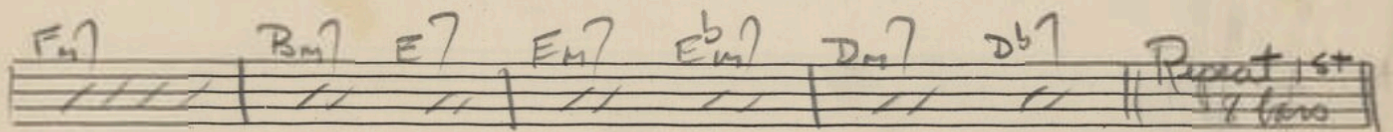
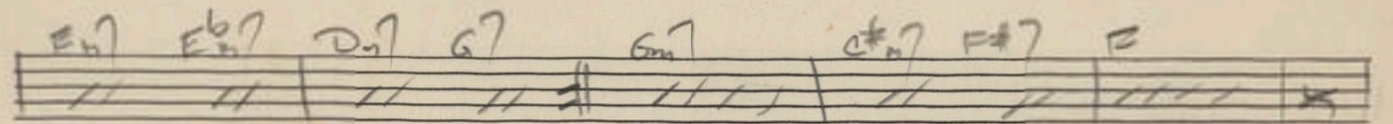
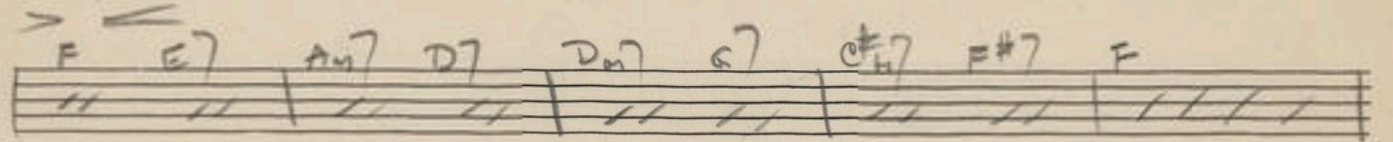
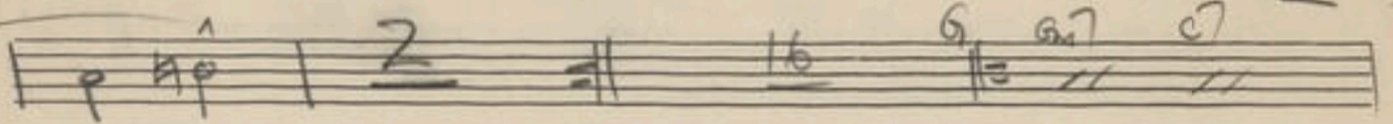
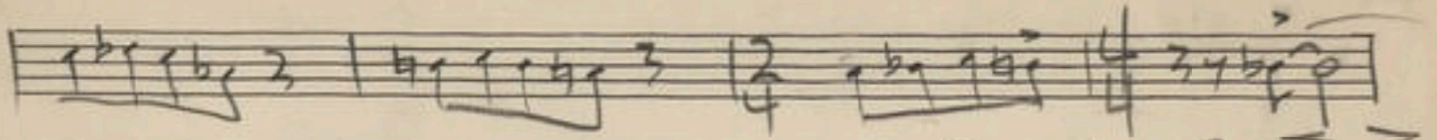




alto



Bill

Jetu

A

1. 2. B

C

tuba

A handwritten musical score for tuba, consisting of 11 staves. The notation includes various rhythmic values, accidentals, and dynamic markings. The first staff begins with a treble clef and a key signature of two flats. The second staff contains large numbers '2', '16', '9', and '32', with a large red scribble over the latter half. The third staff starts with a common time signature. The fourth staff has a first ending bracket. The fifth staff has a second ending bracket. The sixth staff has a first ending bracket. The seventh staff has a first ending bracket. The eighth staff has a first ending bracket. The ninth staff has a first ending bracket. The tenth staff has a first ending bracket. The eleventh staff has a first ending bracket.